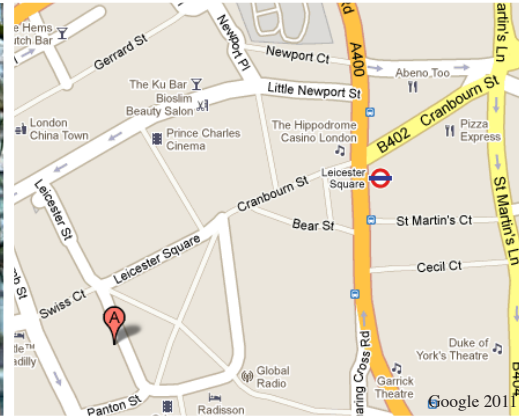




THE COMMUNICATIONS BUILDING

48 LEICESTER SQUARE
LONDON WC2

Part 7th floor: circa 2,700 sq ft – 10,250 sq ft.
Fitted and furnished to a high standard and
ready for immediate occupation.



AMENITIES & SPECIFICATION

- Rent, Rates, Service Charge & Utilities
- Internal repairs, maintenance & cleaning
- Air conditioned, suspended ceilings
- 24-hour access and staffed main reception
- Passenger lift
- Fit-out and furniture
- Wired for power and data

Available on fixed-price terms, including all property costs, fit-out, furniture and data infrastructure

LOCATION

This landmark building is situated in the centre of the West End, on the west side of Leicester Square – one of the world's most renowned squares. The property is served by Leicester Square underground station. It is conveniently located for Covent Garden and is only a short walk from Piccadilly Circus, Embankment, Covent Garden and Charing Cross stations.

DESCRIPTION

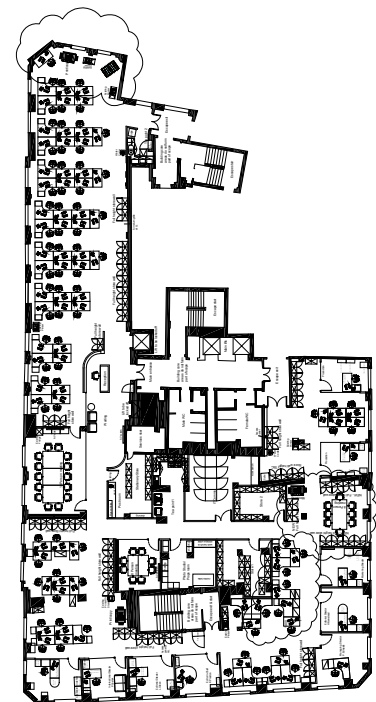
The Communications Building comprises the part 7th floor and is fitted out to provide a mixture of open plan, private offices and meeting rooms. The floor benefits from good natural light and views over Leicester Square.

ACCOMMODATION

Part 7th floor: approximately 2,700 sq ft– 10,250 sq ft.

PROPOSAL

A new sub lease on flexible, all-inclusive lease terms to include Rent, Rates, Service Charge and the Amenities and Specification outlined above.



Indicative layout of 7th floor

FLOOR LEVEL	AREA SIZE
7 th Floor	2,700 sq ft– 10,250 sq ft.

INFORMATION / VIEWING:

For further information or to view, please contact:

+44 (0)20 7947 5300

info@apm-property.com | www.apm-property.com

